

automatic clothes washer model WWA8470V OPERATING INSTRUCTIONS

**SAVE THESE INSTRUCTIONS
WITH YOUR USE AND CARE BOOK**

Before operating your washer,
READ YOUR USE AND CARE BOOK.

It contains valuable information about sorting and loading, laundry additives, stain removal and **IMPORTANT CAUTIONS FOR THE PERSONAL SAFETY OF THOSE USING THIS APPLIANCE.**

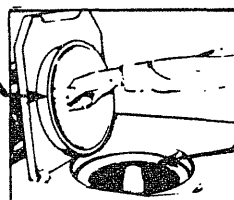
SORT AND LOAD

- Remove filter pan and Mini-Basket™ tub. (The underside of the lid provides a convenient resting place for the filter pan.) Do not use the Mini-Basket tub when doing regular loads. (See page 2 for use of Mini-Wash® system.)

- Add sorted laundry to wash basket. See your Use and Care Book for sorting details.

- A typical full load:

3 double sheets	5 T-shirts
4 long sleeve shirts	3 pair of trousers
5 bath towels	7 wash cloths
4 standard size pillow cases	6 handkerchiefs



- Clothes level should be below the clothes retaining ring.

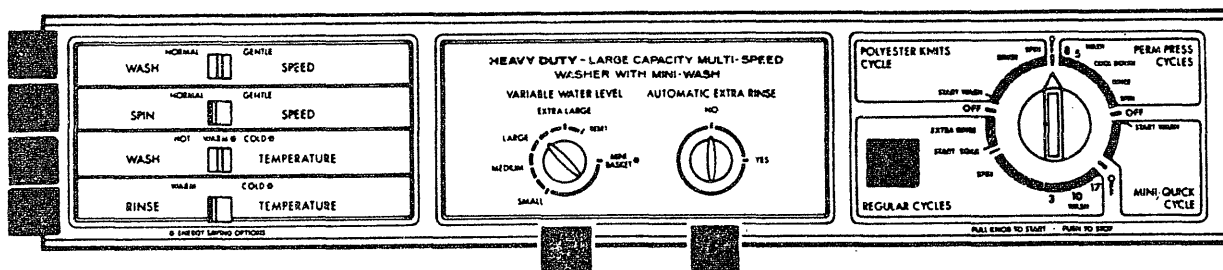
- Replace Filter Pan and add measured amount of detergent as recommended on detergent package. Note: Because of variations in contents, some granular detergents may be difficult to dissolve. If this is a problem:

- After loading the clothes, put the detergent in the wash basket next to the agitator, or,
- Use a liquid detergent.

- For use of Bleach Dispenser and Fabric Softener Dispenser, see page 4.

SET THE CONTROLS

Refer to **CONTROLS SETTING GUIDE** on next page



- Close lid and set controls as follows:

Lid must be closed for washer to operate. Washer will fill but will not agitate or spin with lid open.

- Select **WASH SPEED**.
- Select **SPIN SPEED**.
- Select **WASH TEMPERATURE**.
- Select **RINSE TEMPERATURE**.

Cold rinse will be automatically provided when:

- Cold Wash is selected, OR,
 - Permanent Press Cycle is selected.
- (Cool-down spray rinse and cold-water deep rinse are provided to minimize the setting of wrinkles.)

Select **WATER LEVEL**.

SMALL – Washer is less than 1/3 full of clothes.

MEDIUM – Between 1/3 and 1/2 full.

LARGE – Between 1/2 and 2/3 full.

EXTRA LARGE – Over 2/3 full.

RESET – To increase level, turn Knob to "Reset" and then to new level.

MINI-BASKET – See page 2 for use of MINI-WASH system.

AUTOMATIC EXTRA RINSE.

"YES" provides an automatic second deep rinse following the **REGULAR** wash cycle. If **EXTRA RINSE** is not desired, set switch to "NO".

- Push Cycle Selector Knob in and turn clockwise to your selected wash cycle. See wash cycles on page 3.

- Pull Cycle Selector Knob out to start washer.



The wash cycle setting can be changed at any time. Push in the Cycle Selector knob to stop the washer and reset to the new position.

EFFDATE 11-88

0018

49-9348

CONTROLS SETTING GUIDE

	COTTONS & LINENS				PERMANENT PRESS		POLYESTER KNITS SYNTHETICS & BLENDS	
	Work clothes dungarees, etc. with heavy soil	Work clothes, dungarees, etc. with normal soil	White or Colorfast	Bright Colors	Heavy or Oily Soil	Normal or Light Soil	Heavy or Oily Soil	Normal or Light Soil
WASH SPEED	Normal	Normal	Normal	Normal	Normal	Normal	Normal	Gentle
SPIN SPEED	Normal	Normal	Normal	Normal	Gentle	Gentle	Gentle	Gentle
*WASH TEMP.	Hot	Hot or Warm	Hot or Warm	Warm	Hot	Warm	Warm	Warm
RINSE TEMP.	Cold	Cold	Cold	Cold	Cold	Cold	Cold	Cold
CYCLE	Regular	Regular	Regular	Regular	Perm Press	Perm Press	Polyester Knits	Polyester Knits
**CYCLE SELECTOR SETTING	17 Min.	14 Min.	10 Min.	10 Min.	8 Min.	5-8 Min.	Start Wash	Start Wash

*The cooler wash settings (not below 80°F./27°C.) will save energy. See your Use and Care Book for more complete information.

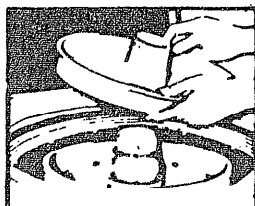
**The wash times suggested here apply to laundering an average weight of clothes under typical home conditions. You may find that some adjustment in these times is desirable.

HOW TO USE THE MINI-WASH® SYSTEM

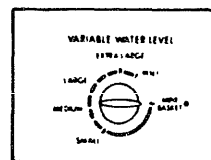
The Mini-Wash system is especially designed for easy and economical laundering of delicate hand-washables and for small loads (up to 2½ lbs.) of regular fabrics. It may be used for articles such as lingerie, ladies hosiery, foundation garments, blouses, sweaters, socks, shirts, baby clothes, and similar items. Also, special articles such as canvas tennis shoes and stuffed toys may be washed in the Mini-Basket tub.

Ladies hosiery and other easily tangled items should always be washed separately. To minimize tangling, use of a net Laundry Bag is recommended.

- The MINI-BASKET TUB can be used with the REGULAR, POLYESTER KNITS or PERM PRESS CYCLES.
- The MINI-BASKET TUB **MUST** be used with the MINI-QUICK CYCLE.
- DO NOT USE the MINI-BASKET TUB with the SOAK CYCLE.
- When using the MINI-BASKET TUB, DO NOT wash clothes in the regular basket at the same time.



- Remove filter pan.
- Place Mini-Basket tub on agitator. (Pulling the agitator toward the front of the machine will provide for easier installation and removal of the Mini-Basket tub.)
- Load clothes in Mini-Basket tub. Observe sorting details in Use and Care Book.
- Replace filter pan.
- Put ¼ to ½ cup (60 to 80 ml) detergent in filter pan.
- For use of BLEACH and FABRIC SOFTENER, see instructions on page 4.
- Close lid and set controls.
 - WATER LEVEL, set to "Mini-Basket" position.
 - SPEED, TEMPERATURE, and CYCLE, follow instructions on page 1.
- Pull Cycle Selector Knob out to start washer.

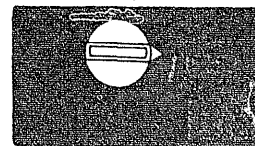


HOW TO USE THE MINI-QUICK™ CYCLE

The Mini-Quick cycle is designed for those small lightly-soiled loads that you need in a hurry.

Follow the MINI-WASH instructions above except:

- Push the Cycle Selector Knob in and turn clockwise to "MINI-QUICK" CYCLE.
- Pull Cycle Selector Knob out to start washer. Cycle will be completed automatically.

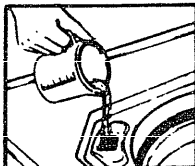


Do not use the Fabric Softener Dispenser with the Mini-Quick Cycle.

HOW TO USE THE BLEACH DISPENSER

The Bleach Dispenser is designed for use with liquid bleach only! If you prefer to use powdered bleach, pour it into the filter pan, NOT into the bleach dispenser.

- Do NOT overflow—Avoid splashing. Undiluted bleach will cause fabric damage.



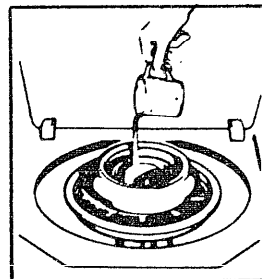
- Pour measured amount of liquid bleach directly into the BLEACH DISPENSER.

- Maximum recommended amount of liquid bleach . . .
 - Full wash: 1 1/4 cup (310 ml) liquid
 - Small wash: 2/3 cup (170 ml) liquid
 - Mini-Wash*: 1/4 cup (60 ml) liquid

*NEVER POUR LIQUID BLEACH DIRECTLY ONTO CLOTHES OR INTO THE MINI-BASKET TUB.

HOW TO USE THE FABRIC SOFTENER DISPENSER

- Position Fabric Softener Dispenser on filter-pan.
- Pour the manufacturer's recommended amount of fabric softener into a standard measuring cup.
- Add enough water to fill the cup 1/2 full.
- Pour the diluted softener into the dispenser.
- The fabric softener will automatically be dispensed at the proper time.



Stopping the washer during the first spin period will cause the dispenser to empty too soon.

For use with Mini-Wash system:

- Use only one teaspoon of concentrated softener or one tablespoon of diluted softener.

Do not use the FABRIC SOFTENER DISPENSER with the MINI-QUICK CYCLE or the SOAK CYCLE.

BEFORE YOU CALL FOR SERVICE . . . Check the TROUBLE SHOOTING GUIDE on the inside of the door. USE AND CARE BOOK. It lists many minor causes of operating failure that you can correct yourself. If you cannot get the service call.

GENERAL  ELECTRIC

GENERAL ELECTRIC COMPANY
HOME LAUNDRY PRODUCTS
APPLIANCE PARK
LOUISVILLE, KENTUCKY 40225

Product improvement is a continuing endeavor at General Electric. Therefore, specifications are subject to change without notice. A General Electric Warranty applies to this product.

