



GE APPLIANCES

COMMERCIAL LAUNDRY

VFD31GDSRWW

7.7 cu. ft. Multipay Front Load Stacking Gas Dryer with stainless steel drum

A proven performer in demanding spaces, this commercial front load dryer delivers durable construction, adaptable payments, and the reliability for which GE is known.

Payment Options

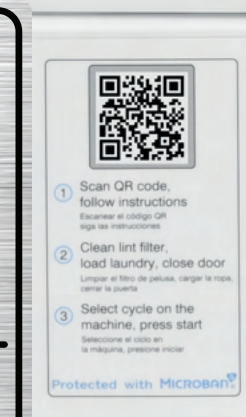
- On Premise (No Payment Ability)
- Included Laundryday™ QR Code Payment App
- Coindrop and More*

Warranty

- 5-Year Parts-Limited

Models Unit Stacks On Top Of

- VFW310SSRWW Washer
- VFD31ESSRWW Electric Dryer
- VFD31GSSRWW Gas Dryer



Stacking Hardware Included

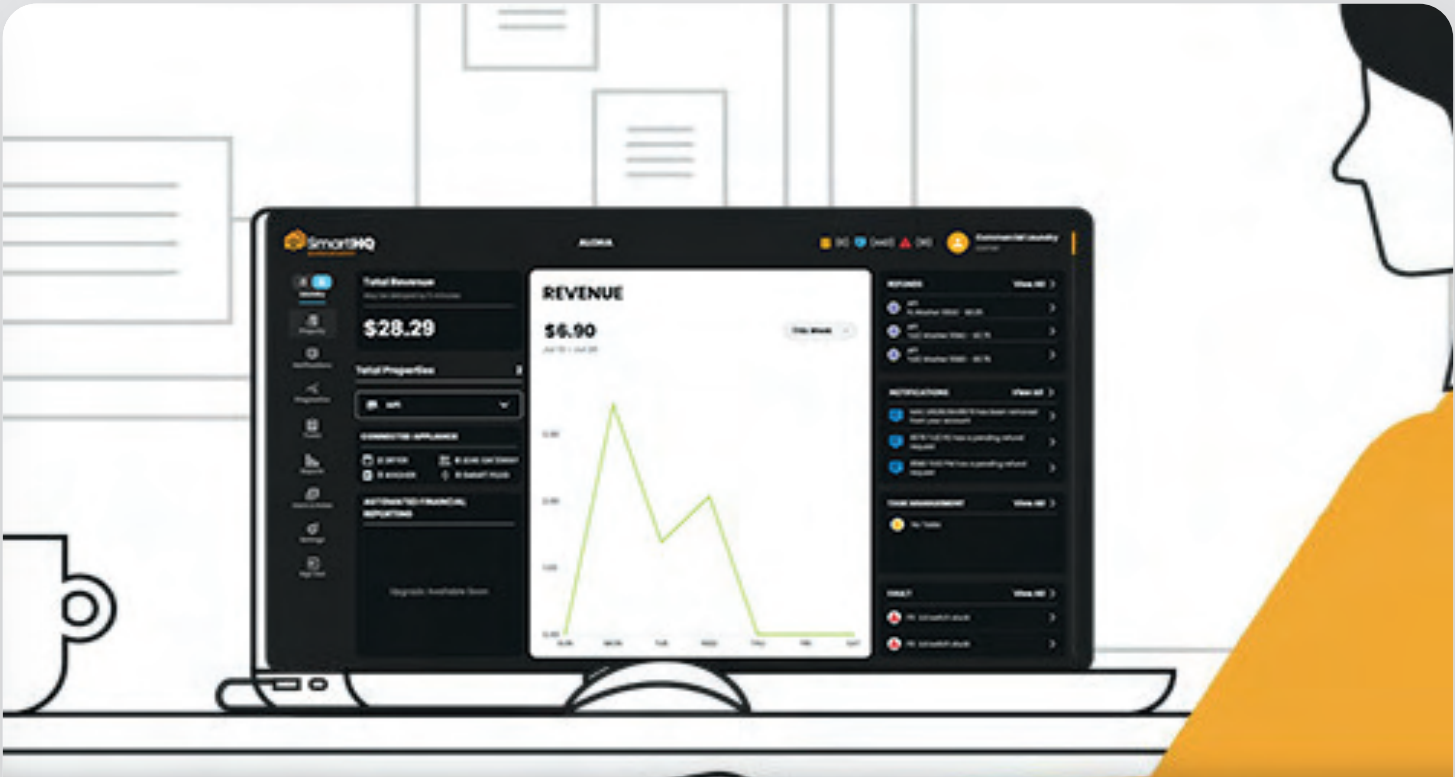


Key Features



Laundryday™ User App

Access to contactless payment and cycle notifications for a modern laundry experience.



SmartHQ™ Management

SmartHQ Management Owner's Dashboard™ offers a centralized space for managing site revenues, machine status, pricing activities and refund requests.



5-Year Parts-Limited Warranty

Enjoy peace of mind thanks to a comprehensive 5-year parts warranty.



Commercial Grade Components

Enjoy lasting performance from built-to-last commercial laundry parts, including a fully front serviceable galvanized steel cabinet, cap touch controls, 1/2 horsepower motor and stainless steel drum.



Microban® Protection

Antimicrobial technology is built into critical areas of this ultrafresh commercial dryer, including the control panel, lint filter and door handle.



Multipay

Payment flexibility allows for optional acceptance of coin payment, built-in QR code payment, or both. Coindrop accessory sold separately.

Dryer Specifications

Model	Multipay Front Load
	VFD31GDSRWW
Control Type	Electronic Push Button
WiFi	Built In
Cycles	6
Dry Time	40 minutes
Payment Options	OPL, App, Coindrop*
Stack Options	VFW310SSRWW Washer VFD31ESSRWW Electric Dryer VFD31GSSRWW Gas Dryer
Exhaust Options	3-Way (Rear, Left, Bottom) 120
Gas Burner BTU/hr	22,000 Natural Gas
Motor HP (kW)	1/3 (.25)
Electrical Requirements	
(V/Hz/Ph- Amp)	120/60/1-15
Gas Inlet Size	3/8" NPT
Drum Volume (Capacity) Cu. Ft. (Liters)	7.4 (210)
Drum Finish/Material	Stainless Steel
Warranty	5-Year Parts-Limited
Net Weight Lbs (kg)	167 (75.7)
Dimensions In (cm)	
Height	43.2 (109.728)
Stacked Height	85.6 (217.424)
Width	27 (68.58)
Depth	32.3 (82.042)
Shipping Dimensions In (cm)	
Height	46.85 (119)
Width	30.47 (77.4)
Depth	35.04 (89)
Shipping Weight Lbs (kg)	176 (79.8)

Dimensions are for planning purposes only. For complete information see the installation instructions packed with the product.
A reliable WiFi network and owner registration are required for pay-per-use operation.
*Third party payment via coin drop emulation. Approved vendors are ESD/Greenwald, Kiosoft, PayRange.