



GE APPLIANCES

COMMERCIAL LAUNDRY

VTD56GASVWB

7.4 cu. ft. Multipay Gas Dryer with aluminized alloy drum

A proven performer in demanding spaces, this commercial gas dryer delivers durable construction, adaptable payments, and the reliability for which GE is known.

Payment Options

- On Premise (No Payment Ability)
- Included Laundryday™ QR Code Payment App
- Coindrop and More*

Warranty

- 5-Year Parts-Limited

Matching Washer Model

- VTW565ASVWB

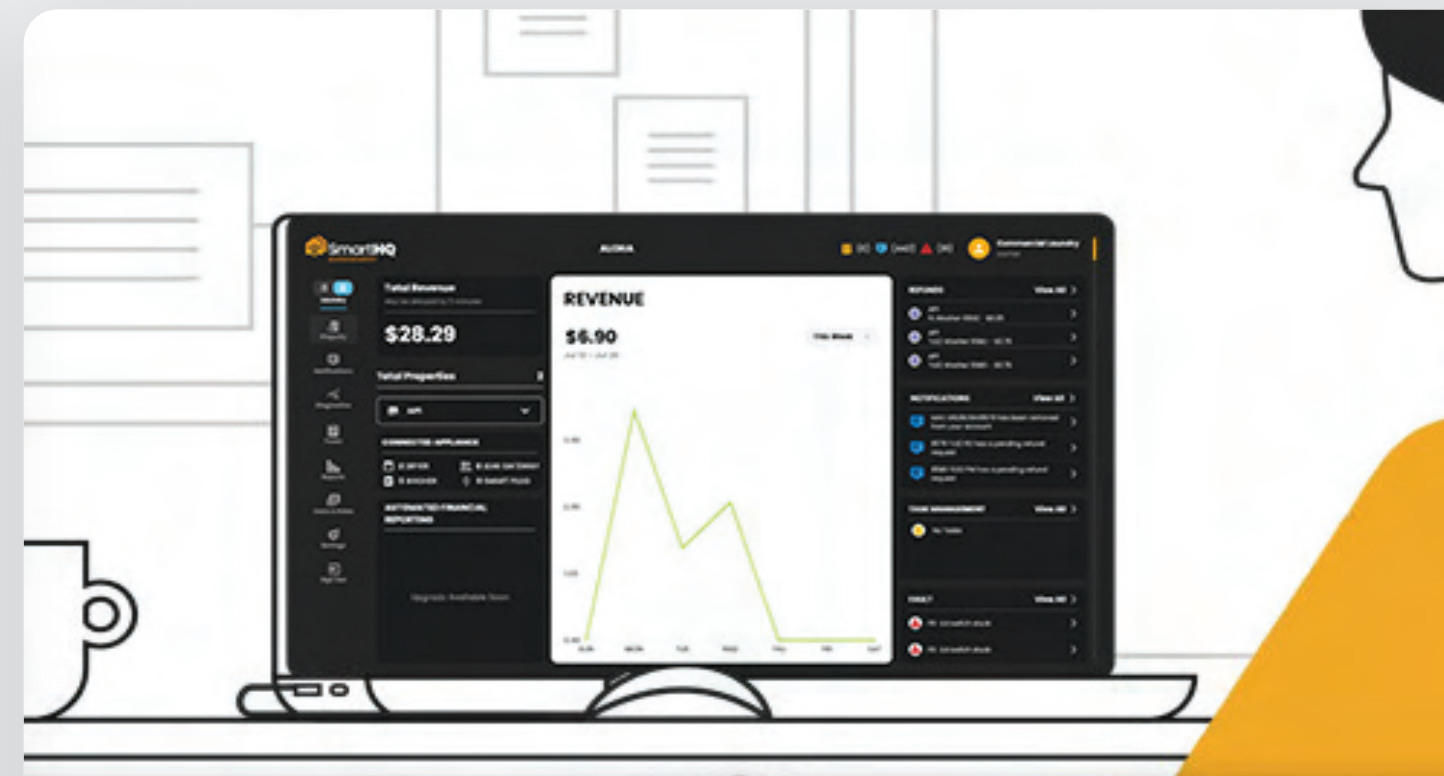


Key Features



Laundryday™ User App

Access to contactless payment and cycle notifications for a modern laundry experience.



SmartHQ™ Management

SmartHQ Management Owner's Dashboard™ offers a centralized space for managing site revenues, machine status, pricing activities and refund requests.



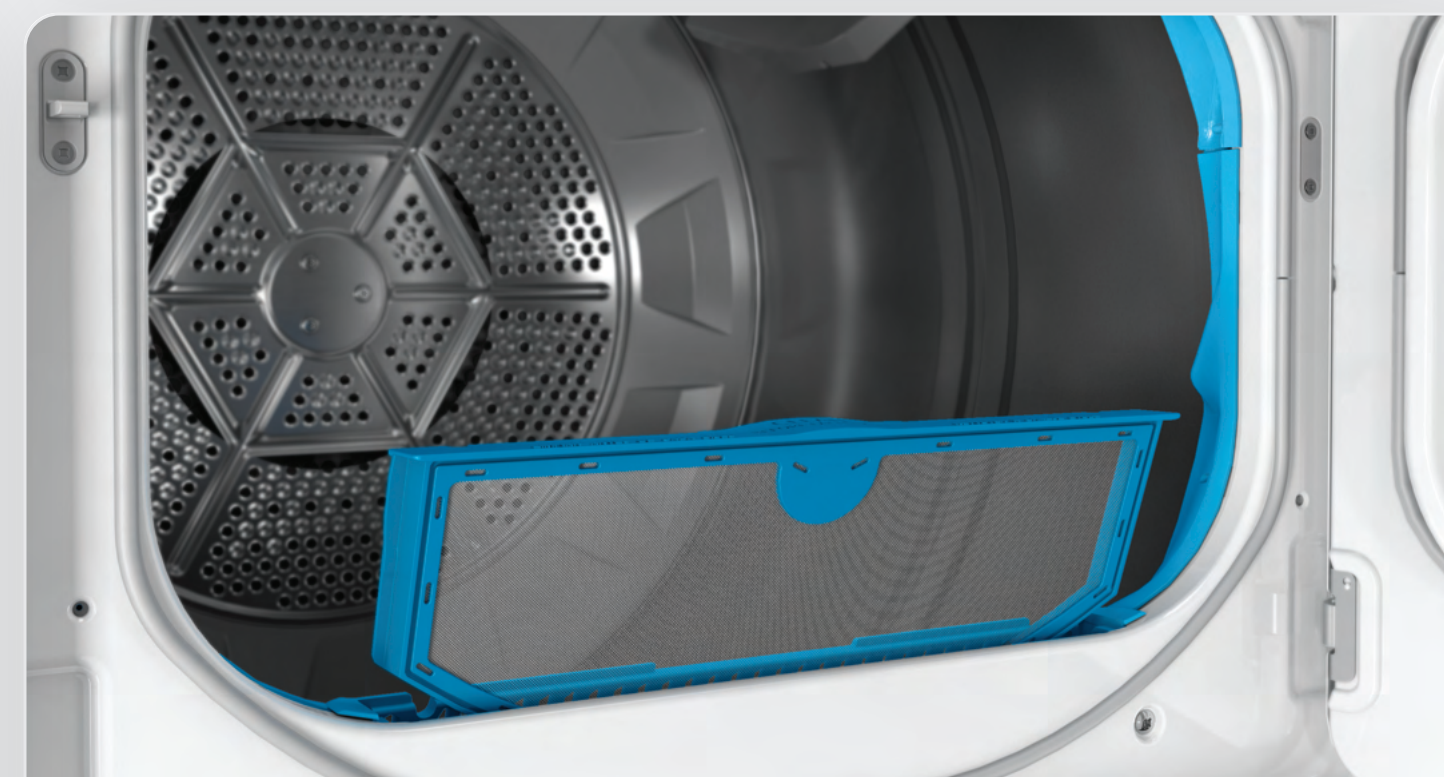
5-Year Parts-Limited Warranty

Enjoy peace of mind thanks to a comprehensive 5-year parts warranty.



Commercial Grade Components

Enjoy lasting performance from built-to-last commercial laundry parts, including a fully front serviceable galvanized steel cabinet and 1/3 horsepower motor.



Microban® Protection

Antimicrobial technology is built into critical areas of this ultrafresh commercial dryer, including the control panel and tethered lint filter.



Multipay

Payment flexibility allows for optional acceptance of coin payment, built-in QR code payment, or both. Coin drop accessory sold separately.

Dryer Specifications

Model	Multipay Top Load
	VTD56GASVWB
Control Type	Electronic Touch, LED Display
WiFi	Built In
Cycles	4 Heat Selections
Dry Time	15, 30, 45, 60, 75, 90 minutes
Payment Options	OPL, App, Coindrop*
Exhaust Options	3-Way (Rear, Left, Bottom)
Gas Burner BTU/hr	25,000 Natural Gas
Motor HP (kW)	1/3 (.25)
Electrical Requirements	
(V/Hz/Ph- Amp)	120/60/1-15
Gas Inlet Size	3/8" NPT
Drum Volume (Capacity) Cu. Ft. (Liters)	7.4 (210)
Drum Finish/Material	Aluminized Alloy
Warranty	5-Year Parts-Limited
Net Weight Lbs (kg)	105 (47.6)
Dimensions In (cm)	
Height	44 (111.76)
Width	27 (68.58)
Depth	30.85 (78.359)
Shipping Dimensions In (cm)	
Height	46.8 (119)
Width	28.9 (73.4)
Depth	32.4 (82.3)
Shipping Weight Lbs (kg)	118 (53.5)

Dimensions are for planning purposes only. For complete information see the installation instructions packed with the product..
A reliable WiFi network and owner registration are required for pay-per-use operation.
* Third party payment via coin drop emulation. Approved vendors are ESD/Greenwald, Kiosoft, PayRange.