



**GE APPLIANCES**  
*a Haier company*

**PRO**

LET'S BUILD

**THE FUTURE**



## 2023 **BUILDER APPLIANCE SELECTION GUIDE**

*Builder Focus Model Program*



**C A F É**



**Profile**

**Haier**

**Hotpoint.**

Q4



WE CONNECT. WE SIMPLIFY.  
**WE LEAD.**

# LET'S CONNECT

The possibilities begin with a better way of doing business. More than helping complete all kinds of homes, we make sure we constantly respond to your evolving needs — continually proving ourselves as partners for the long run. Our nationwide sales and support team is dedicated to builder professionals, ready and able to help you throughout each phase of every project.





# BUILDER FOCUS MODEL PROGRAM

GE Appliances is committed to our builder customers and has developed a Builder Focus Model Program to help homeowners select kitchen packages from our Café, GE Profile™, GE and Hotpoint brands. These are a collection of high-volume SKUs, by brand, to drive improved availability.



GE Appliances helps you conserve energy and save money. We have been an ENERGY STAR® Partner since 2001. We are committed to creating energy-efficient, high-performance household appliances.



Compliant with the Americans with Disabilities Act.



Compliant with the Uniform Federal Accessibility Standards.



**Chef Connect** – For instant convenience, choose when to automatically sync clocks and the range elements with the microwave's or hood's surface light and vent. The Bluetooth® word mark and logos are registered trademarks owned by Bluetooth SIG, Inc. and any use of such marks by GE Appliances is under license. Other trademarks and trade names are those of their respective owners.



National Sanitation Foundation.



Appliances with built-in WiFi powered by SmartHQ™ that offer remote monitoring and enhanced features are indicated by this icon.



This mark indicates that a product has voice-assistance capabilities.



Appliances with this icon are Made in America and contain 70% to 90% U.S. content. Product content details at [GEAppliances.com/USA](http://GEAppliances.com/USA).

Find Clickable Links Throughout

## TABLE OF CONTENTS

Pro Pledge .....	02	Café .....	12
Builder Focus Model Program .....	03	Profile .....	21
Awards .....	04	GE.....	29
Resources & Tools.....	05	Haier .....	44
A Brand for Every Build.....	07	Hotpoint .....	46
Monogram.....	08		



C A F É



Profile

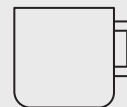
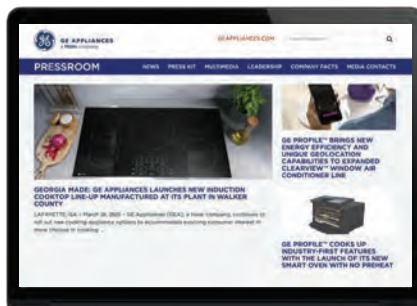
Haier

Hotpoint

# LET'S IMAGINE WHAT'S NEXT

With over a century of providing appliances in our history, we're still looking forward, constantly, even obsessively, exploring new ways to innovate for our customers and the future of home — any kind of home. With industry awards such as Best of IBS Home Tech Product for GE Profile UltraFast Combo and Best of KBIS Connected Home for GE Profile Induction Cooktop, you can be sure we'll help you build the future.

**CLICK HERE TO  
VISIT OUR PRESSROOM**



**#1**

**MOST USED APPLIANCE**  
brand among builders for both  
kitchen appliances and laundry  
**10+ YEARS\***



**2022 GOLD AWARD**  
Most Innovative Appliance Company  
**6 YEARS IN A ROW**



**4 YEARS IN A ROW**  
**IOT BREAKTHROUGH**  
Smart Appliance  
Company of the Year

\*2006-2020 BUILDER BRAND USE STUDY, 2019-2022 HOME BUILDER EXECUTIVE BRAND ANALYSIS







# RESOURCES

Our goal is to always be the easy, go-to choice, so we streamline your experience every step of the way. Our outstanding house of brands lets you find exactly what you need for any build. And tools such as our newly revamped, all-inclusive customer portal, CustomerNet, plus our marketing resources, training and much more are easy to access and use.



GE APPLIANCES CUSTOMERNET

GE Appliances CustomerNet



GE APPLIANCES  
a Haier company

THE HUB  
Contract Marketing Resource Center

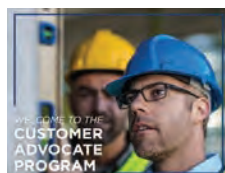
The Hub Contract Marketing  
Resource Center

SmartHQ<sup>™</sup>  
PRO

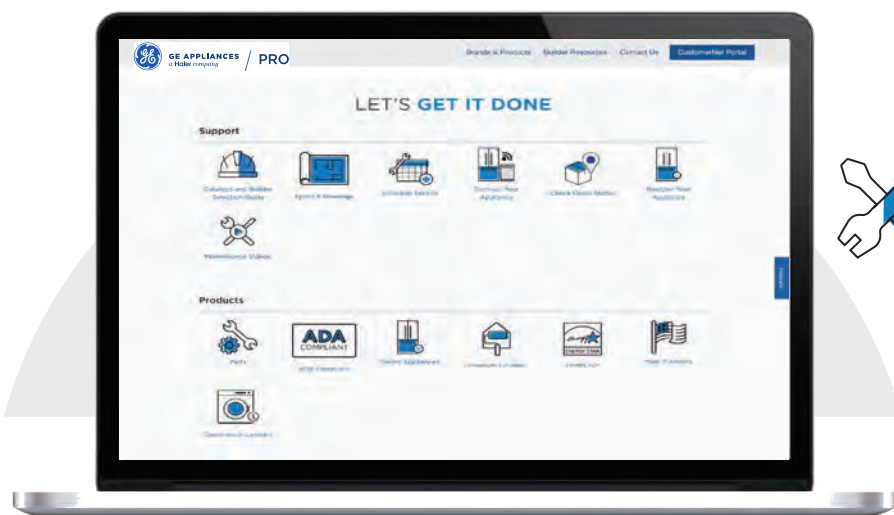
SmartHQ Pro



GE Appliances Academy



Builder Customer Advocate Program



# TOOLS

Visit  
[GEAPPLIANCES.COM/PRO](https://GEAPPLIANCES.COM/PRO)  
to access all of our tools.



# HAVE QUESTIONS?

Have questions about your new appliance? Get them answered with a simple scan. Every new GE appliance, across all of our brands, is equipped with a unique, scannable QR code on its model tag that unlocks the owner's manual, parts and accessories, how-to videos and more. Whether walking a homebuyer through new home orientation, training a new maintenance manager or moving in a new tenant, save time with easy-to-access information and support. **Watch this video to learn more** ▶

## STEP 1

Locate the QR code on your appliance.

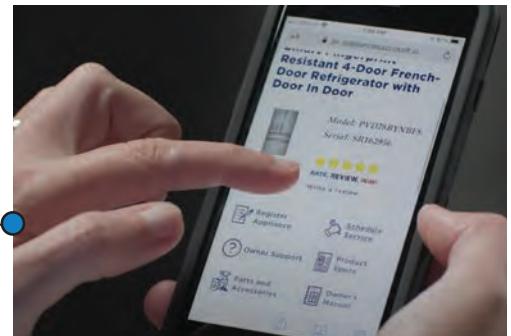


Scan the QR code.

## STEP 2

## STEP 3

QR code pulls up the product page on the website.





GE APPLIANCES  
a Haier company

PRO

Overview

# A BRAND **FOR** **EVERY BUILD**



CAFÉ



Profile

Haier

Hotpoint

[GEAppliances.com/Pro](https://GEAppliances.com/Pro)



## ELEVATE EVERYTHING.

We are redefining the world of luxury appliances, one detail at a time. With uncompromising attention to every detail, Monogram appliances truly Elevate Everything™ in luxury kitchens. Monogram's Minimalist and Statement Collections, featuring rich materials and precise design, are crafted with style that endures.



*See the latest from Monogram on our social channels.*





# STATEMENT COLLECTION

## TRADITIONAL STYLE WITH UNPARALLELED PERFORMANCE

The Monogram Statement Collection brings modern design together with traditional kitchen appliance features. Edge-to-edge handles and robust knobs feel integrated into the appliances. The gleaming stainless steel finish is set off with solid brass accents, wide glass windows, and rich, interactive LCD displays. Restaurant-inspired features invite you to take on any cooking aspiration while the smart appliances effortlessly sync your kitchen with your life.



### IT'S IN THE DETAILS

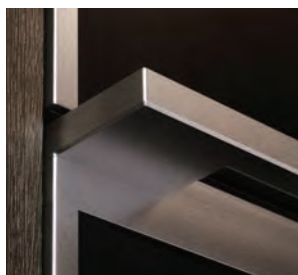
- *Edge-to-Edge Handles with Brass End Caps*
- *Brass Burner details*
- *Signature Wide Windows*
- *Substantial Knobs with Brass Accent*



# MINIMALIST COLLECTION

SIMPLE  
ELEGANCE  
WITH  
INCOMPARABLE  
PERFORMANCE

The Minimalist Collection further streamlines even the most contemporary kitchen with flush installation and only the most essential hardware. Its expansive glass design reflects our keen eye for detail and functional aesthetic. Interactive LCD screens and push-to-open oven doors are modern details with a powerful purpose — heightening your culinary experience. And smart appliance features are the modern convenience you didn't realize you needed.



## DEFINING DETAILS

- *Precisely Machined Metals*
- *Interactive LCD Screens*
- *Push-to-Open Oven Doors*
- *Expansive Glass*

# BUILDER PROGRAMS

## CONSUMER REBATE

The One for You, One for Free rebate starts with Monogram professional ranges: receive up to three free eligible Monogram appliances or generous credits toward the appliances of your choice.

## PREFERRED BUILDER PROGRAM

A trade discount off UMRP is available to qualified Builders and Designers who specify a minimum of 8 pieces of Monogram a year.

## ELEVATED BUILDER PROGRAM

An enhanced trade discount for Builders who commit to specifying a minimum of 25 pieces of Monogram in a calendar year.

*Reach out to your Area Sales Manager or Monogram Sales Manager to ask how you can take advantage of these programs.*



## MONOGRAM SUPPORT OPTIONS

### Monogram-Specific Call Agent

This dedicated support line offers prioritized support for Builders and Resellers to order parts, schedule service, and give advice on products.

1-800-444-1845 Option #4

Hours are M – F 8:00am – 6:30pm ET

Get in touch with our dedicated team to answer installation questions via email, phone, or by appointment.

[elevateyourinstall@geappliances.com](mailto:elevateyourinstall@geappliances.com)

1-866-408-2751 Hours are M – F 8:00am – 6:30pm ET



C A F É

DISTINCT BY DESIGN™



## Customizable kitchen appliances with distinct design

The Café brand of kitchen appliances offers two collections unlike any other. The Customizable Professional Collection in matte black, matte white and stainless showcases designer-curated hardware options, while the Modern Glass Collection features a platinum glass finish and sophisticated design. The choices let style-conscious consumers reflect their personal style.



See the latest from Café on our social channels.



FREE-STANDING

# Primary

Stunning pairing, trusted features.  
Enjoy unlimited performance  
for everyday cooking.



Café™ ENERGY STAR® 27.8 Cu. Ft.  
Smart French-Door Refrigerator  
with Hot Water Dispenser

**CFE28TP2MS1**

- Precise Fill setting
- Hot Water Dispenser
- TwinChill evaporators



Café™ Stainless Steel Interior  
Dishwasher with Sanitize, Ultra  
Wash & Dry and Third Rack

**CDT845P2NS1\***

- Ultra Wash with 90+ cleaning jets
- Ultra Dry
- Bottle Jets



Café™ 2.1 Cu. Ft. Over-the-Range  
Microwave Oven

**CVM521P2MS1**

- Chef Connect
- Steam cook
- Sensor cooking controls



Café™ 30" Smart Slide-In,  
Front-Control, Double-Oven  
Range with Convection

**CGS750P2MS1**

- GAS**
- 6.7 cu. ft. total oven capacity
  - True Convection with Precise Air (lower oven only)
  - Six-burner, edge-to-edge cooktop



Café™ 30" Smart Slide-In,  
Front-Control, Radiant and  
Convection Double Oven Range

**CES750P2MS1**

- ELECTRIC**
- 12"/9"/6" 3,600-watt Power Boil™
  - 6.7 cu. ft. total oven capacity
  - True Convection with Precise Air (lower oven only)



## Additional Cooking Options



Café™ 30" Smart Slide-In,  
Front-Control, Radiant and  
Convection Range

**CES700P2MS1**

- ELECTRIC**
- Edge-to-edge glass cooktop
  - 12"/9"/6" 3,600-watt Power Boil™ burner
  - True Convection with Precise Air



Café™ 30" Smart Slide-In,  
Front-Control, Range  
with Convection Oven

**CGS700P2MS1**

- GAS**
- Six-burner, edge-to-edge cooktop
  - Cast-iron integrated griddle
  - 21,000-BTU tri-ring burner



\*SmarthQ™ Connect Module is required and sold separately. It is available for order on [geappliances.com](http://geappliances.com), part number PBX23W00Y0.

BUILT-IN

# Primary

Stunning pairing, trusted features. Enjoy unlimited performance for everyday cooking.



**Café™ ENERGY STAR® 27.8 Cu. Ft. Smart French-Door Refrigerator with Hot Water Dispenser**

**CFE28TP2MS1**

- Precise Fill setting
- Hot Water Dispenser
- TwinChill evaporators



**Café™ 30" Smart Double Wall Oven with Convection**

**CTD70DP2NS1**

- Precision cooking
- 7" full-color display
- No-preheat air fry



**Café™ 30" Touch-Control Electric Cooktop**

**CEP90302TSS**

- **ELECTRIC**
- Power Boil™ on tri- and dual-ring elements
- Easy-clean surface
- Glide touch controls



**Café™ 30" Smart Touch-Control Induction Cooktop**

**CHP90302TSS**

- **ELECTRIC**
- Gourmet Guided Cooking
- Pan presence sensor
- Four induction elements



**Café™ 30" Commercial Style Hood**

**UVW93042PSS**

- 610-CFM venting system
- Four-speed fan control
- Horizontal and vertical exhaust



**Café™ Stainless Steel Interior Dishwasher with Sanitize, Ultra Wash & Dry and Third Rack**

**CTD845P2NS1\***

- Ultra Wash with 90+ cleaning jets
- Ultra Dry
- Bottle Jets



## Ventilation Option



**Café™ 36" Commercial Style Hood**

**UVW93642PSS**

- 610-CFM venting system
- Four-speed fan control
- Horizontal and vertical exhaust



## Additional Cooking Options



**Café™ 30" Smart Single Wall Oven with Convection**

**CTS70DP2NS1**

- Precision cooking
- 7" full-color display
- True European Convection with Direct Air



**Café™ 36" Built-In Touch-Control Induction Cooktop**

**CHP90362TSS**

- **ELECTRIC**
- Effortless control and responsiveness
- Easy-clean surface
- Guided cooking



**Café™ 36" Touch-Control Electric Cooktop**

**CEP90362TSS**

- **ELECTRIC**
- Power Boil™ on tri- and dual-ring elements
- Easy-clean surface
- Glide touch controls



**Café™ 30" Cooktop**

**CGP70302NS1**

- **GAS**
- 18,000 BTU burner
- More with less cookware
- LED backlit knobs



**Café™ 36" Cooktop**

**CGP70362NS1**

- **GAS**
- 18,000 BTU burner
- Spend more time cooking and less time cleaning up
- LED backlit knobs



\*SmarHQ™ Connect Module is required and sold separately. It is available for order on [geappliances.com](http://geappliances.com), part number PBX23W00Y0.

FREE-STANDING

# Refined

INDUCTION

Upgraded offerings with enhanced capabilities. Expect total convenience and inspired cooking experiences.



## Café™ ENERGY STAR® 28.7 Cu. Ft. Smart 4-Door French-Door Refrigerator With Dual-Dispense AutoFill Pitcher

**CGE29DP2TS1**

- Dual-Dispense AutoFill Pitcher
- Convertible Drawer with Soft Freeze
- LED Light Wall

Available August 2023



## Café™ 2.1 Cu.Ft. Over-the-Range Microwave Oven

**CVM521P2MS1**

- Chef Connect ▶
- Steam cook
- Sensor cooking controls



## Café™ 30" Smart Slide-In, Front-Control, Induction and Convection Range with Warming Drawer

**CHS900P2MS1** ▶



### ELECTRIC

- Gourmet Guided cooking
- Built-in WiFi, powered by SmartHQ™
- Precision oven modes



## Café™ Stainless Steel Interior Dishwasher with Sanitize, Ultra Wash & Dry and Third Rack

**CDT845P2NS1\***

- Ultra Wash with 90+ cleaning jets ▶
- Ultra Dry
- Bottle Jets



\*SmartHQ™ Connect Module is required and sold separately. It is available for order on [geappliances.com](http://geappliances.com), part number PBX23W00Y0.



# BUILT-IN Refined

Stunning pairing, trusted features.  
Enjoy unlimited performance  
for everyday cooking.



**Café™ ENERGY STAR® 22.1 Cu. Ft. Smart Counter-Depth French-Door Refrigerator with Hot Water Dispenser**

**CYE22TP2MS1**

- Counter-depth design
- Hot water dispenser
- Precise Fill setting



**Café™ 30" Smart Double Wall Oven with Convection**

**CTD70DP2NS1**

- Precision cooking
- 7" full-color display
- True European Convection with Direct Air (upper oven)
- No-preheat air fry



**Café™ 30" Built-In Touch-Control Induction Cooktop**

**CHP90302TSS**

- **ELECTRIC**
- Effortless control and responsiveness
- Easy-clean surface
- Guided Cooking



**Café™ 30" Commercial Style Hood**

**UVW93042PSS**

- 610-CFM venting system
- Four-speed fan control
- Horizontal and vertical exhaust



**Café™ Stainless Steel Interior Dishwasher with Sanitize, Ultra Wash & Dry and Third Rack**

**CDT845P2NS1\***

- Ultra Wash with 90+ cleaning jets
- Ultra Dry
- Bottle Jets



## Ventilation Option



**Café™ 36" Commercial Style Hood**

**UVW93642PSS**

- 610-CFM venting system
- Four-speed fan control
- Horizontal and vertical exhaust



## Additional Cooking Options



**Café™ Professional Series 30" Smart Built-In Convection Single Wall Oven**

**CTS70DP2NS1**

- In-oven camera
- Dehydrate mode
- Precision cooking



**Café™ 36" Built-In Touch-Control Induction Cooktop**

**CHP90362TSS**

- **ELECTRIC**
- Effortless control and responsiveness
- Easy-clean surface
- Guided cooking



**Café™ 30" Cooktop**

**CGP70302NS1**

- **GAS**
- 18,000 BTU burner
- More with less cookware
- LED backlit knobs



**Café™ 36" Cooktop**

**CGP70362NS1**

- **GAS**
- 18,000 BTU burner
- Spend more time cooking and less time cleaning up
- LED backlit knobs



\*SmartHQ™ Connect Module is required and sold separately. It is available for order on [geappliances.com](http://geappliances.com), part number PBX23W00Y0.

# FRESH & LIGHT

## Matte White

Complement painted or white cabinetry, or brighten up traditional wooden cabinets with these light, fresh white kitchen appliances.



**Café™ ENERGY STAR® 27.7 Cu. Ft. Smart French-Door Refrigerator with Hot Water Dispenser**

**CFE28TP4MW2**

- TwinChill evaporator
- Precise Fill Setting
- Hot water dispenser



**Café™ Stainless Steel Interior Dishwasher with Sanitize and Ultra Wash & Dry**

**CDT845P4NW2\***

- Ultra Wash with 90+ cleaning jets
- Ultra Dry
- Bottle Jets



**Café™ 1.7 Cu. Ft. Convection Over-the-Range Microwave Oven**

**CVM517P4RW2**

- Air Fry
- Sensor Cooking Controls
- Steam Cook Button



**Café™ 30" Smart Slide-In, Front-Control, Gas Range with Convection Oven**

**CGS700P4MW2**

- GAS**
- Built-In WiFi, Powered by SmartHQ™ App\*
  - Personalized Features + Upgrades
  - No-Preheat Air Fry



**Café™ 30" Smart Slide-In, Front-Control, Radiant and Convection Range**

**CES700P4MW2**

- ELECTRIC**
- Built-In WiFi, Powered by SmartHQ™ App\*
  - Personalized Features + Upgrades
  - No-Preheat Air Fry



## Additional Cooling Options



**Café™ ENERGY STAR® 22.1 Cu. Ft. Smart Counter-Depth French-Door Refrigerator with Hot Water Dispenser**

**CYE22TP4MW2**

- TwinChill evaporator
- Precise Fill Setting
- Hot water dispenser



**Café™ ENERGY STAR® 28.7 Cu. Ft. Smart 4-Door French-Door Refrigerator With Dual-Dispense AutoFill Pitcher**

**CGE29DP4TW2**

- Dual-Dispense AutoFill Pitcher
- Convertible Drawer with Soft Freeze
- LED Light Wall



\*SmartHQ™ Connect Module is required and sold separately. It is available for order on [geappliances.com](http://geappliances.com), part number PBX23W00Y0.

# SLEEK & BOLD

## Matte Black

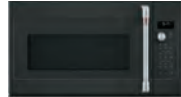
Make a statement in any kitchen, with a finish inspired by the natural, darker tones of wood and stone.



**Café™ ENERGY STAR® 27.7 Cu. Ft. Smart French-Door Refrigerator with Hot Water Dispenser**

**CFE28TP3MD1**

- Precise Fill Setting
- Hot water dispenser
- TwinChill evaporator



**Café™ Stainless Steel Interior Dishwasher with Sanitize and Ultra Wash & Dry**

**CDT845P3ND1\***

- Ultra Wash & Dry
- Loading Flexibility
- Adjustable Upper Rack



**Café™ 30" Smart Slide-In, Front-Control, Gas Range with Convection Oven**

**CGS700P3MD1**

- **GAS**
- Built-In WiFi, Powered by SmartHQ™ App\*
- Personalized Features + Upgrades
- No-Preheat Air Fry



**Café™ 1.7 Cu. Ft. Convection Over-the-Range Microwave Oven**

**CVM517P3RD1**

- Air Fry
- Steam Cook Button
- Chef Connect



**Café™ 30" Smart Slide-In, Front-Control, Radiant and Convection Range**

**CES700P3MD1**

- **ELECTRIC**
- Built-In WiFi, Powered by SmartHQ™ App\*
- Personalized Features + Upgrades
- No-Preheat Air Fry



## Additional Cooling Options



**Café™ ENERGY STAR® 22.1 Cu. Ft. Smart Counter-Depth French-Door Refrigerator with Hot Water Dispenser**

**CYE22TP3MD1**

- Precise Fill Setting
- Hot water dispenser
- Counter-depth design



**Café™ ENERGY STAR® 28.7 Cu. Ft. Smart 4-Door French-Door Refrigerator With Dual-Dispense AutoFill Pitcher**

**CGE29DP3TD1\*\***

- Dual-Dispense AutoFill Pitcher
- Convertible Drawer with Soft Freeze
- LED Light Wall



\*SmartHQ™ Connect Module is required and sold separately. It is available for order on [geappliances.com](http://geappliances.com), part number PBX23W00Y0.



# FREE-STANDING Pro Package

Upgraded offerings with enhanced capabilities. Expect total convenience and inspired cooking experiences.



**Café™ ENERGY STAR®**  
22.1 Cu. Ft. Smart Counter-Depth  
French-Door Refrigerator  
with Hot Water Dispenser

**CYE22TP2MS1**

- Hot water dispenser ▶
- Counter-depth design ▶
- Wi-Fi connect ▶



**Café™ 36" Smart**  
All-Gas Commercial-Style  
Range with 6 Burners

**CGY366P2TS1**

**GAS**

- 6.2 cu ft. capacity ▶
- Inspirational burner ▶
- 21K BTU Multiple-Ring burner ▶



**Commercial Style Hood**

- Built-In WiFi
- 610-CFM range hood blower
- Heat sensor

**UVW93042PSS – 30"**

**UVW93642PSS – 36"**



**Café™ Stainless Steel Interior**  
Dishwasher with Sanitize  
and Ultra Wash & Dry

**CDT845P2NS1\***

- Ultra Wash with 90+ cleaning jets ▶
- Loading Flexibility ▶
- Adjustable upper rack ▶



## Additional Cooking Options



**Café™ 1.7 Cu. Ft.**  
Convection Over-the-Range  
Microwave Oven

**CVM517P2RS1**

- Air Fry ▶
- Steam cook button ▶
- Chef Connect ▶



**Café™ 30"**  
Gas Cooktop

**CGP70302NS1**

- 18,000 BTU burner
- More with less cookware
- LED backlit



**Café™ 36"**  
Gas Cooktop

**CGP70362NS1**

- 18,000 BTU burner
- Spend more time cooking and less time cleaning up
- LED backlit



## Pro Package



**Café™ 48" Smart Dual-Fuel**  
Commercial-Style Range  
with 6 Burners and Griddle

**C2Y486P2TS1**

**GAS**

- Versatile cooktop ▶
- Caterer oven ▶
- Superior heat distribution with industry-exclusive Inspirational burner



## COOKING



**Café™ Built-In Microwave/Convection Oven**

**CWB713P2NS1**

- 17 cu. ft. capacity
- Convection cooking
- Combination Fast Cook setting
- Steam cook



**Café™ 1.5 Cu. Ft. Smart Countertop Convection/Microwave Oven**

**CEB515P2NSS**

- Scan-to-Cook Technology
- Built in WiFi

*Available Trim Kits*

**CX152P2MSS – 27"**  
**CX153P2MSS – 30"**



**Café™ 2.1 Cu. Ft. Smart Over-the-Range Microwave Oven**

**CVM721M2NS5**

- Platinum Glass
- Built-in WiFi powered by SmartHQ™
- Scan-to-cook technology
- Chef Connect



**Café™ 1.7 Cu. Ft. Convection Over-the-Range Microwave Oven**

**CVM517P2RS1**

- Air Fry
- Steam cook button
- Chef Connect



**Café™ 30" Smart Built-In Convection Double Wall Oven**

**CTD90DP2NS1**

- ADA Compliant
- Built-in WiFi powered by SmartHQ™
- In-Oven Camera



**Café™ 30" Combination Double Wall Oven With Convection And Advantium® Technology**

**CTC912P2NS1**

- Five-in-one oven
- Speedcook
- True European Convection (lower oven)



**Café™ 30" Smart Built-In Convection Single Wall Oven**

**CTS90DP2NS1**

- Built-in WiFi powered by SmartHQ™
- No Preheat Air Fry
- Precision Cooking Modes
- In-Oven Camera



**Café™ 36" Built-In Touch Control Induction Cooktop**

**CHP90361TBB**

- Easy Clean Surface with Beveled Edges
- Guided Cooking
- Rapid Boil



**Café™ 30" Wall-Mount Glass Canopy Chimney Hood**

**CVV73012MSS**

- Dual-halogen cooktop light
- 350-CFM Venting System
- Electronic backlit controls



**Café™ 36" Wall-Mount Glass Canopy Chimney Hood**

**CVV73612MSS**

- Dual-halogen cooktop light
- 350-CFM Venting System
- Electronic backlit controls

## REFRIGERATORS



**Café™ 18.6 Cu. Ft. Smart Counter-Depth, French-Door Refrigerator**

**CWE19SP2NS1**

- Fits in a 33" opening
- Counter-depth design
- WiFi optional



**Café™ 23.1 Cu. Ft. Smart Counter-Depth, French-Door Refrigerator**

**CWE23SP2MS1**

- Counter-depth design
- Internal water dispenser
- Factory-installed icemaker



**Café™ 22.3 Cu. Ft. Smart Counter-Depth, 4-Door French-Door Refrigerator**

**CXE22DP2PS1**

- Convertible Drawer with Soft Freeze
- LED Light Wall
- Hands-Free AutoFill



**Café™ 27.8 Cu. Ft. Smart Four-Door, French-Door Refrigerator**

**CVE28DP2NS1**

- Hands-Free AutoFill
- Convertible Drawer with Soft Freeze
- LED Light Wall



**Café™ 21.9 Cu. Ft. Counter-Depth, Side-by-Side Refrigerator**

**CZS22MP2NS1**

- Designed for flush install
- Spillproof shelves
- Humidity controlled drawers





**This is  
smarter business.**

GE Profile provides homeowners modern design and the latest features in home appliances. Designed for today's smart home, GE Profile provides features that allow you to do more, through remote monitoring, voice activation and technology that takes the guesswork out of cooking and cleaning.

This is the Smarter Innovation you've been looking for. This is smarter business, this is GE Profile.



**See the latest from Profile on our social channels.**

# For the Modern Kitchen Package Options

FREE-STANDING

## BASIC



GE Profile™ ENERGY STAR®  
27.7 Cu. Ft.  
French-Door Refrigerator

**PFE28KYNFS**

- Hands-Free AutoFill
- Second icemaker option
- Drop-down tray



GE Profile™ 30" Smart  
Slide-In Gas

**PGS930YPFS**

- Built-in WiFi powered by SmartHQ™
- No-preheat air fry
- Edge-to-edge cooktop



GE Profile™ 2.1 Cu. Ft.  
Over-the-Range Sensor  
Microwave Oven

**PVM9005SJSS**

- Chef Connect
- Bottom control with integrated handle
- Fast Cook
- Convection rack



GE Profile™ 30" Smart  
Slide-In Electric Convection

**PSS93YPFS**

- 12"/9"/6" 3,600-watt Power Boil™
- Two 8" synchronized elements
- Glide touch controls



GE Profile™ Top Control with Stainless Interior  
Dishwasher, Towel Bar Handle

**PDT715SYVFS\***

- Dry Boost with Fan Assist
- Deep Clean Silverware Jets
- Bottle Jets



## Additional Options



GE Profile™  
ENERGY STAR®  
25.3 Cu. Ft.  
Side-by-Side Refrigerator

**PSE25KYHFS**

- Showcase LED lighting
- Turbo Cool setting
- Quick Ice setting



GE Profile™  
UltraFresh System™  
Dishwasher with  
Stainless Steel Interior

**PDP755SYRFS**

- Microban™ Antimicrobial Technology
- UltraFresh System
- Steam+Sani



GE Profile™  
UltraFresh System™  
Dishwasher with  
Stainless Steel Interior

**PDT755SYRFS**

- Microban™ Antimicrobial Technology
- UltraFresh System
- Steam+Sani



\*SmartHQ™ Connect Module is required and sold separately. It is available for order on [geappliances.com](http://geappliances.com), part number PBX23W00Y0.

# For the Technology Enthusiasts

## BUILT-IN WALL OVENS

### BASIC



GE Profile™ ENERGY STAR® 22.1 Cu. Ft. Counter-Depth French-Door Refrigerator

**PYE22KYNFS**

- Hands-Free AutoFill
- Full-width, electronic temperature-controlled drawer with LED lights
- Second icemaker option



GE Profile™ 30" Built-In Touch Control Electric Cooktop

**PEP9030STSS**

- Power Boil™ on Tri- and Dual-Ring elements
- Precision temperature control
- Guided cooking



GE Profile™ 30" Commercial Style Hood

**UVW93042PSS**

- 610-CFM venting system
- Four-speed fan control
- Horizontal and vertical exhaust



GE Profile™ 30" Smart Built-In Convection Double Wall Oven

**PTD7000SNSS**

- No-preheat air fry
- Precision cooking
- Built-in WiFi powered by SmartHQ



GE Profile™ Top Control with Stainless Interior Dishwasher Pocket Handle

**PDT715SYVFS\***

- Dry Boost™ with Fan Assist
- Deep Clean Silverware Jets
- Bottle jets



### Additional Options



GE Profile™ 30" Smart Built-In Convection Single Wall Oven

**PTS7000SNSS**

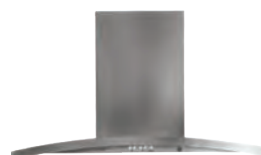
- No-preheat air fry
- Precision cooking
- Built-in WiFi powered by SmartHQ™



GE Profile™ 36" Built-In Touch Control Electric Cooktop

**PEP9036STSS**

- Power Boil™ on Tri- and Dual-Ring elements
- Precision temperature control
- Guided cooking



GE Profile™ 30"/36" Wall-Mount Chimney Hood

**PV970NSS - 30"  
PV976NSS - 36"**

- 450-CFM venting system
- Push-button controls
- Variable-speed fan control



**UVW7301SWSS - 30"  
UVW7361SWSS - 36"**

Available October 2023

- 420-CFM venting system
- Push-button controls
- Variable-speed fan control

\*SmartHQ™ Connect Module is required and sold separately. It is available for order on [geappliances.com](http://geappliances.com), part number PBX23W00Y0.



# For the Technology Enthusiasts

## BUILT-IN WALL OVENS



### ADVANCED



GE Profile™ Series ENERGY STAR® 28.7 Cu. Ft. Smart Fingerprint Resistant 4-Door French-Door Refrigerator With Dual-Dispense AutoFill Pitcher

#### PGE29BYTFS

- Dual-Dispense with AutoFill Pitcher
- LED Light Wall
- Adjustable Temperature Drawer



GE Profile™ 30" Built-In Touch Control Induction Cooktop

#### PHP9030STSS

- Digital touch controls
- 11" 3,700-watt Power Boil™ element
- SyncBurners



GE Profile™ 30" Smart Built-In Convection Double Wall Oven

#### PTD7000SNSS

- No-preheat air fry
- Precision cooking
- Built-in WiFi powered by SmartHQ™



GE Profile™ 30" Commercial Style Hood

#### UVW93042PSS

- 610-CFM venting system
- Four-speed fan control
- Horizontal and vertical exhaust



GE Profile™ UltraFresh System™ Dishwasher with Microban® Antimicrobial Technology Top Control

#### PDT755SYRFS

- Microban Antimicrobial Technology
- UltraFresh System
- Steam+Sani
- Dry Boost with Fan Assist



### Additional Options



GE Profile™ 36" Built-In Touch Control Induction Cooktop

#### PHP9036STSS

- Digital touch controls
- 11" 3,700-watt Power Boil™ element
- Sync Burners



GE Profile™ 36" Commercial Style Hood

#### UVW93642PSS

- 610-CFM venting system
- Four-speed fan control
- Horizontal and vertical exhaust



GE Profile™ 30"/36" Smart Designer Wall-Mount Perimeter Venting

#### UVW9301SLSS - 30" UVW9361SLSS - 36"

- Perimeter venting
- LED backlit glass touch control
- Included duct cover reaches up to 10 ft.



# À LA CARTE OPTIONS



Profile™

À la Carte Options

## REFRIGERATORS



GE Profile™ 23.1 Cu. Ft. Smart Refrigerator

### PWE23KYNFS\*

- Fits 32" openings
- Internal water dispenser
- Factory-installed icemaker
- Optional WiFi Connect
- Full-width, electronic temperature-controlled drawer with LED lights
- TwinChill evaporators



## MICROWAVES & TRIM KITS



GE Profile™ 2.2 Cu. Ft. Built-In Sensor Microwave Oven

### PEB7227ANDD

- Dark grey microwave with stainless trim kit
- Glass touch controls
- 2.2 cu. ft. capacity
- Sensor cooking controls



### Available Trim Kits

#### JX7227SLSS – 27"

#### JX7230SLSS – 30"

- Required for built-in microwaves
- Order separately



GE Profile™ 1.7 Cu. Ft. Convection Over-the-Range Microwave Oven

### PVM9179SRSS

- Air Fry
- Sensor cooking controls
- Chef Connect

*\*SmartHQ™ Connect Module is required and sold separately. It is available for order on [geappliances.com](http://geappliances.com), part number PBX23W00Y0.*



# LAUNDRY PACKAGE

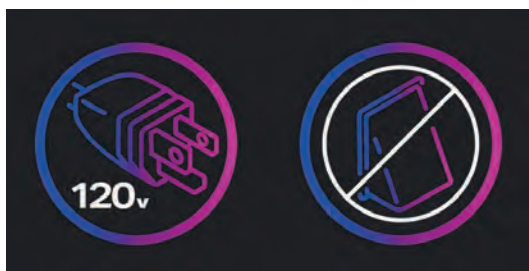


Profile™

Ultrafast Combo

# Space-Saving, Time-Saving Technology

ULTRAFAST COMBO



## Easy Installation

Plugs into standard 120v outlet and no need for a dry exhaust vent.



## Complete Cycle in 2 Hours\*

Wash + dry a large load of laundry in about 2 hours\* without the hassle of transferring clothes between two machines.



## Greater Energy Savings

50% more energy efficient drying\*\* with Ventless Heat Pump.



GE Profile™ 4.8 Cu. Ft. Capacity  
UltraFast Washer/Dryer Combo  
with Ventless Heat Pump Technology

**PFQ97HSPVDS**

- 2-in-1 Washer/Dryer
- Fast Airflow Drying System
- Easy Installation, 120V and no dryer vent



\*Based on completing the Normal Wash + Dry cycle with Eco Dry using a 10-lb. DOE or Mixed Load in about 2 hours. See Use & Care.

\*\*Efficiency rating as compared to the requirements for ENERGY STAR qualification for standard electric dryers.



# À LA CARTE OPTIONS

## LAUNDRY

### SILVER



GE Profile™ 5.0 Cu. Ft. Capacity Washer with Smarter Wash Technology and FlexDispense™ – Wash Mechanism: Infusor

#### PTW600BSRWS

- Smarter Wash Technology
- Microban® Antimicrobial Technology
- Smart FlexDispense™



GE Profile™ 4.9 Cu. Ft. Capacity Washer with Smarter Wash Technology and FlexDispense™ – Wash Mechanism: Single Action Agitator

#### PTW605BSRWS

- Smarter Wash Technology
- Microban® Antimicrobial Technology
- Smart FlexDispense™



GE Profile™ 7.4 Cu. Ft. Capacity Dryer with Washer Link, Wrinkle Care and Sensor Dry Wash Mechanism: Single Action Agitator

- Sensor Dry
- Sanitize Cycle
- 120 ft. venting

PTD60EBSRWS - Electric  
PTD60GBSRWS - Gas



### GOLD



GE Profile™ 5.4 Cu. Ft. Capacity Washer with Smarter Wash Technology and FlexDispense™

#### PTW900BPTRS

- Voice Assistant with Built-In Alexa
- SmartDispense™ Technology
- Quiet Wash with direct drive motor and patented dBt control



GE Profile™ 7.3 Cu. Ft. Capacity Smart Electric/Gas Dryer with Fabric Refresh

- Fabric Refresh
- Steam
- Tangle Control

PTD90EBPTRS - Electric  
PTD90GBPTRS - Gas



### PLATINUM



GE Profile™ 5.3 Cu. Ft. Capacity Smart Front Load ENERGY STAR® Steam Washer with Adaptive SmartDispense™ UltraFresh Vent System Plus™ with OdorBlock™

#### PFW950SPTDS

- UltraFresh Vent System+
- Microban® Antimicrobial Technology
- Adaptive SmartDispense™



GE Profile™ 7.8 Cu. Ft. Capacity Smart Front Load Dryer with Steam and Sanitize Cycle

- Steam Sanitize
- Adaptive MySettings
- Washer Link

PFD95ESPTDS - Electric  
PFD95GSPTDS - Gas







good things, for life.



**GE APPLIANCES**

## Dependable Appliances Built for Modern Life

GE Appliances offers kitchens that perfectly complement modern finishes, materials and colors. Backed by more than 100 years of purposeful innovations, owners can expect style, lasting quality and features that improve their everyday lives.



**See the latest from GE Appliances  
on our social channels.**



# BASE HOME PACKAGE

## FREE-STANDING



**GE® 25.3 Cu. Ft. Side-by-Side Refrigerator**

**GSS25GYPFS**

- LED lighting
- Edge-to-edge shelves
- Fingerprint Resistant



or



**GE® Dishwasher with Front Controls**

**GDF510PSRSS\***

- Dry Boost™
- Active Flood Protect
- Piranha hard-food disposer
- Reliable performance



**GE® 1.5 Cu. Ft. Over-the-Range Microwave Oven**

**JVM3162RJSS**

- 950 watts (IEC-705 test procedure)
- Convenience cooking controls
- Auto and time defrost

**GE® 30" Free-Standing Range**

**JGBS60REKSS**

**GAS**

- 13,000-BTU burner
- Precise Simmer burner
- Black matte steel grates

or

**GE® 30" Free-Standing Range**

**JB645RKSS**

**ELECTRIC**

- Two 9"/6" Power Boil™ elements
- Self-clean oven
- Dual-element bake



## Additional Cooking Options



**GE® 36" Built-In Cooktop**

**JGP3036SLSS**

**GAS**

- 15,000-BTU Power Boil™ burner
- Precise Simmer burner
- Sealed cooktop burners
- MAX burner system



**GE® 30" Free-Standing Range**

**JGB645SEKSS**

**GAS**

- Two-piece continuous edge-to-edge cooktop
- 15,000 BTU Power Boil™ burner
- Precise Simmer burner



**GE® 30" Free-Standing Range**

**JBS60RKSS**

**ELECTRIC**

- 9"/6" Power Boil element
- Dual-element bake
- 5.3 cu. ft. oven capacity



\*SmartHQ™ Connect Module is required and sold separately. It is available for order on [geappliances.com](http://geappliances.com), part number PBX23W00Y0.



# BASE HOME PACKAGE

## BUILT-IN



### GE® 25.3 Cu. Ft. Side-by-Side Refrigerator

**GSS25GYPFS**

- LED lighting
- Edge-to-edge shelves
- Clear door shelves
- Fingerprint Resistant



### GE® 30" Under-the-Cabinet Hood

**JVX3300SJSS**

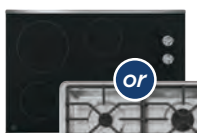
- 10-minute installation
- Convertible venting options
- Cooktop lighting



### GE® Dishwasher with Front Controls

**GDF510PSRSS\***

- Dry Boost™
- Reliable Performance
- Piranha™ hard-food disposer



### GE® 30" Built-in Knob Control Cooktop

**JP3030SJSS**

- Melt setting
- Power Boil™ elements
- Hot surface indicator lights
- Cooktop "On" indicator light



### GE® 30" Smart Built-in Single Wall Oven

**JTS3000SNSS**

- Never-Scrub, heavy-duty racks
- Self-clean oven with optional Steam Clean
- Built-in WiFi powered by SmartHQ™



### GE® 30" Built-In Cooktop

**JGP3030SLSS**

- 15,000-BTU Power Boil™ burner
- Precise Simmer burner
- Sealed cooktop burners
- MAX burner system



## Additional Cooking Options



### GE® 36" Built-In Cooktop

**JGP3036SLSS**



- 15,000-BTU Power Boil™ burner
- Precise Simmer burner
- Sealed cooktop burners
- MAX burner system



### GE® 36" Built-in Knob Control Cooktop

**JP3036SLSS**



- Melt setting
- Hot surface indicator lights
- Cooktop "On" indicator light
- Power Boil™ element



### GE® 36" Under-the-Cabinet Hood

**JVX5360SJSS**

- 10-minute installation
- Convertible venting options
- Four-speed with boost, 310-CFM venting system



### GE® 30" Smart Built-In Double Wall Oven

**JTD3000SNSS**

- Never-Scrub, heavy-duty racks
- Self-clean oven with optional Steam Clean (both)
- Built-in WiFi powered by SmartHQ™



\*SmartHQ™ Connect Module is required and sold separately. It is available for order on [geappliances.com](http://geappliances.com), part number PBX23W00Y0.



# FOR THE FAMILY PACKAGE

## FREE-STANDING



**GE® ENERGY STAR® 25.6 Cu. Ft. French-Door Refrigerator**

**GFE26JYMFS**

- Fingerprint-resistant Stainless
- External controls with temperature set display, child lock and door alarm
- 2 humidity-controlled drawers and full-width drawer



or



**GE® Top Control with Plastic Interior Dishwasher**

**GDT535PSRSS**

- Dry Boost™
- Steam+Sani
- Reliable Performance



**GE® 30" Slide-In Range**

**JGSS66SELSS**

- GAS**
- Edge-to-edge cooktop
  - Two 15,000-BTU Power Boil™ burners
  - Extra-large, integrated, non-stick griddle
  - 10,000-BTU oval burner



**GE® 1.7 Cu. Ft. Over-the-Range Sensor Microwave Oven**

**JVM6175SKSS**

- Weight and time defrost
- 1,000 watts (IEC-705 test procedure)
- Two-speed, 300-CFM venting system
- Charcoal filter installation

**GE® 30" Slide-In Range**

**JS645SLSS**

- ELECTRIC**
- Two 9"/6" 3100W Power Boil™ elements
  - Self-clean oven
  - Dual-element bake



## Counter-Depth Refrigerator



**GE® ENERGY STAR® 22.1 Cu. Ft. Counter-Depth French-Door Refrigerator**

**GYE22GYNFS\***

- Counter-depth design
- Space-saving icemaker
- Second icemaker option
- TwinChill evaporators



\*SmartHQ™ Connect Module is required and sold separately. It is available for order on [geappliances.com](http://geappliances.com), part number PBX23W00Y0.

# FOR THE FAMILY PACKAGE

## BUILT-IN



GE APPLIANCES

FOR THE FAMILY PACKAGE Built-In



**GE® ENERGY STAR® 22.1 Cu. Ft. Counter-Depth French-Door Refrigerator**

**GYE22GYNFS\***

- Counter-depth design
- Space-saving icemaker
- Second icemaker option
- TwinChill evaporators



**GE® 30" Smart Built-In Convection Double Wall Oven**

**JTD5000SNSS**

- True European Convection
- Precision temperature probe
- Never-Scrub, heavy-duty, smooth-glide racks



**GE® 30" Knob Control Cooktop**

**JP3030SJSS**



**ELECTRIC**

- Melt setting
- Power Boil™ elements
- Hot surface indicator lights
- Cooktop "On" indicator light



**GE® 30" Wall-Mount Pyramid Chimney Hood**

**JVW5301SJSS**

- 350-CFM venting system with boost
- Electronic backlit controls
- Dual-halogen cooktop lighting
- Vent hood installation

**GE® Top Control with Plastic Interior Dishwasher**

**GDT535PSRSS\***

- Dry Boost™
- Steam+Sani
- Reliable Performance



## Additional Options



**GE® ENERGY STAR® 25.6 Cu. Ft. French-Door Refrigerator**

**GFE26JYMFS**

- Fingerprint-resistant Stainless
- External controls with temperature set display, child lock and door alarm
- 2 humidity-controlled drawers and full-width drawer



**GE® 30" Smart Built-In Convection Single Wall Oven**

**JTS5000SNSS**

- True European Convection
- Precision temperature probe
- Never-Scrub, heavy-duty, smooth-glide racks



**GE® 36" Built-in Knob Control Cooktop**

**JP3036SLSS**



**ELECTRIC**

- Melt setting
- Power Boil™ element
- Hot surface indicator lights
- Cooktop "On" indicator light



**GE® 36" Wall-Mount Pyramid Chimney Hood**

**JVW5361SJSS**

- 350-CFM venting system with boost
- Electronic backlit controls
- Dual-halogen cooktop lighting



**GE® 30" or 36" ENERGY STAR® Under-the-Cabinet Hood**

**JVX5300SJSS  
JVX5305SJSS**

- Four-speed with boost, 310-CFM venting system
- Dual-halogen lighting with night light (bulbs included)
- Optional remote control for ADA installation (UXRC70)



\*SmartHQ™ Connect Module is required and sold separately. It is available for order on [geappliances.com](http://geappliances.com), part number PBX23W00Y0.

# SLATE FOR THE FAMILY PACKAGE

## FREE-STANDING

### BETTER



#### GE® ENERGY STAR® 27.7 Cu. Ft. French-Door Refrigerator

##### GFE28GMKES

- TwinChill evaporators
- Fingerprint Resistant
- 2 humidity-controlled drawers and full-width drawer with LED light



#### GE® ENERGY STAR® 25.6 Cu. Ft. Smart Refrigerator

##### GFE26JMMES

- Fits 36" opening
- Space-saving icemaker & LED lighting
- External controls with temperature set display, child lock and door alarm
- Spillproof shelves



#### GE® Top Control with Plastic Interior Dishwasher

##### GDF550PMRES\*

- Dry Boost™
- AutoSense Cycle
- Manual + adjustable Upper Rack



#### GE® 1.7 Cu. Ft. Over-the-Range Sensor Microwave Oven

##### JVM6175EKES

- Weight and time defrost
- 1,000 watts (IEC-705 test procedure)
- Two-speed, 300-CFM venting system
- Charcoal filter installation

#### GE® 30" Free-Standing Range

##### JGBS66EEKES

- **GAS**
- Edge-to-edge cooktop
- Extra-large, integrated non-stick griddle
- 15,000-BTU Power Boil™ burner

#### GE® 30" Free-Standing Electric Range

##### JB645EKES

- **ELECTRIC**
- Two 9"/6" Power Boil™ elements
- Self-clean oven
- Ceramic-glass cooktop
- 5.3 cu. ft. oven capacity



### GOOD



#### GE® ENERGY STAR® 25.3 Cu. Ft. Side-by-Side Refrigerator

##### GSS25GMPES

- LED lighting
- Edge-to-edge shelves
- Clear door shelves



\*SmarthQ™ Connect Module is required and sold separately. It is available for order on [geappliances.com](http://geappliances.com), part number PBX23W00YO.

#### GE® Top Control with Plastic Interior Dishwasher

##### GDF550PMRES\*

- Dry Boost™
- AutoSense Cycle
- Manual + adjustable Upper Rack



#### GE® 1.7 Cu. Ft. Over-the-Range Sensor Microwave Oven

##### JVM6175EKES

- Weight and time defrost
- 1,000 watts (IEC-705 test procedure)
- Two-speed, 300-CFM venting system
- Charcoal filter installation

#### GE® 30" Free-Standing Range

##### JGBS66EEKES

- **GAS**
- Edge-to-edge cooktop
- Extra-large, integrated non-stick griddle
- 15,000-BTU Power Boil™ burner

#### GE 30" Free-Standing Electric Range

##### JB645EKES

- **ELECTRIC**
- Two 9"/6" Power Boil™ elements
- Self-clean oven
- Ceramic-glass cooktop
- 5.3 cu. ft. oven capacity





# HIGH-PERFORMANCE PACKAGE

## FREE-STANDING



GE APPLIANCES

HIGH-PERFORMANCE PACKAGE Free-Standing



### GE® ENERGY STAR® 27.7 Cu. Ft. French-Door Refrigerator

**GFE28GYNFS**

- TwinChill evaporators
- Fingerprint Resistant
- 2 humidity-controlled drawers and full-width drawer with LED light



### GE® ENERGY STAR® 25.6 Cu. Ft. French-Door Refrigerator

**GFE26JYMFS**

- Fingerprint Resistant
- Space-saving icemaker
- 2 humidity-controlled drawers and full-width drawer with LED light



### GE® Top Control Dishwasher with Stainless Steel Interior and Sanitize Cycle

**GDT670SYVFS**

- Dry Boost™ Technology
- Third Rack with Removable Silverware Caddy
- Deep Clean Silverware Jets

Available October 2023



### GE® 30" Slide-In Convection Range

**JGS760SPSS**



**GAS**

- No-preheat air fry
- Edge-to-edge cooktop
- Built-in WiFi powered by SmartHQ™



### GE® 1.7 Cu. Ft. Over-the-Range Sensor Microwave Oven

**JVM7195SKSS**

- 1,000 watts (IEC-705 test procedure)
- Weight and time defrost
- Four-speed, 400-CFM venting system

or

### GE® 30" Slide-In Convection Range

**JS760SPSS**



**ELECTRIC**

- No-preheat air fry
- 12"/9" dual element
- Built-In WiFi powered by SmartHQ™



\*SmartHQ™ Connect Module is required and sold separately. It is available for order on [geappliances.com](http://geappliances.com), part number PBX23W00Y0.

# À la Carte Options

## DISHWASHERS

### Built-In Hidden Controls



**GE® Top Control with Plastic Interior Smart Dishwasher with Sanitize Cycle & Dry Boost™**

**GDT635HSRSS**

- Built-in WiFi powered by SmartHQ™
- Dry Boost™
- Bottle Jets
- Active Flood Protect
- Smooth Touch Controls
- 50 dBA



**GE® Top Control with Stainless Steel Interior Smart Dishwasher with Sanitize Cycle & Dry Boost™**

**GDT665SSNSS**

**GDT670SYVFS**

Available October 2023

- Dry Boost™
- Steam+Sani
- Active Flood Protect
- Piranha™ hard-food disposer
- Cabinet-depth flush install
- WiFi optional\*
- Reliable Performance
- 46 dBA



Stainless – GDT535PSRSS  
White – GDT535PGRWW  
Black – GDT535PGRBB

**GE® Plastic Interior Smart Dishwasher**

**GDT535P\***

- Dry Boost™
- Steam+Sani
- Active Flood Protect
- Piranha™ hard-food disposer
- Cabinet-depth flush install
- WiFi optional\*
- Reliable Performance
- 55 dBA



### Built-In Front Controls



Stainless – GDF510PSRSS  
White – GDF510PGRWW  
Black – GDF510PGRBB  
Stainless – GDF511PSRSS (with power cord)  
White – GDF511PGRWW (with power cord)  
Black – GDF511PGRBB (with power cord)

**GE® Plastic Interior Smart Dishwasher**

**GDF510P\***

- Dry Boost™
- Active Flood Protect
- Piranha™ hard-food disposer
- WiFi optional\*
- Reliable Performance



**GE® Plastic Interior Smart Dishwasher**

**GDF450PSRSS\***

- Heavy Wash with Dry Boost™
- Normal Wash with Heated Dry
- Active Flood Protect
- Piranha™ hard-food disposer
- Cabinet-depth flush install
- Built-up-floor capable
- WiFi optional\*
- Reliable Performance



### GE Spacemaker® Dishwashers



**GE® Stainless Steel Interior Smart Dishwasher**

**GDT226SSLSS\***

- ADA compliant with low-profile installation
- 3-level wash
- AutoSense Cycle
- Bottle Jets
- Piranha™ hard-food disposer with removable filter
- Sanitize option (NSF 184 Certified)
- WiFi optional\*
- 51 dBA



**GE® Stainless Steel Interior Smart Dishwasher**

**GDT225SSLSS\***

- ADA compliant
- 3-level wash
- AutoSense Cycle
- Bottle Jets
- Piranha™ hard-food disposer with removable filter
- WiFi optional\*
- 51 dBA



### GE Spacemaker® Disposals



**GE® 1 HP Continuous Feed Garbage Disposer Non-Corded**

**GFC1020N**

- Over 2,800 RPM
- Easy Installation



**GE® 3/4 HP Continuous Feed Garbage Disposer Non-Corded**

**GFC720N**

- Over 2,700 RPM
- Easy Installation



**GE® 1/2 HP Continuous Feed Garbage Disposer Non-Corded/Corded**

**GFC520N Non-Corded**

**GFC525N Corded**

- Over 2,600 RPM
- Easy Installation



**GE® 1/3 HP Continuous Feed Garbage Disposer Non-Corded/Corded**

**GFC320N Non-Corded**

**GFC325N Corded**

- Over 2,300 RPM
- Easy Installation

\*SmartHQ™ Connect Module is required and sold separately. It is available for order on [geappliances.com](http://geappliances.com), part number PBX23W00Y0.



# À la Carte Options

## FREE-STANDING RANGES



### GE® 30" Self-Clean Range

**JB256**

#### ELECTRIC

- 5.0 cu. ft. oven capacity
- Self-clean oven
- Sensi-Temp Technology

*Stainless - JB256RTSS  
White - JB256DMWW  
Black - JB256DMBB*



### GE® 30" Convection Range

**JB655YKFS**

#### ELECTRIC

- No-preheat air fry
- Fingerprint-resistant options
- Self-clean oven
- 5.3 cu. ft. oven capacity



### GE® 30" Convection Range

**JGB735SPSS**

#### GAS

- No-preheat air fry
- Edge-to-edge cooktop
- Integrated griddle



### GE® 30" Free-Standing Range

**JGBS66REKSS**

#### GAS

- Edge-to-edge cooktop
- Extra-large integrated non-stick griddle
- 15,000 BTU Power Boil™ burner
- Center oval burner

## MICROWAVES & VENTILATION



### GE® 1.6 Cu. Ft. Capacity Oven

**JNM3163RJSS**

- 950 watts (IEC-705 test procedure)
- Convenience cooking controls
- Auto and time defrost



### GE® 1.6 Cu. Ft. Capacity Oven

**JVM3160RFSS**

- 1,000 watts (IEC-705 test procedure)
- Convenience cooking controls
- Auto and time defrost
- Two-speed, 300-CFM venting system
- Charcoal filter installation



### GE® 1.7 Cu. Ft. Capacity Oven

**JVM6172SKSS**

- 1,000 watts (IEC-705 test procedure)
- Weight and time defrost
- Two-speed, 300-CFM venting system



### GE® 1.9 Cu. Ft. Capacity Sensor Oven

**JVM7195SKSS**

- 1,000 watts (IEC-705 test procedure)
- Weight and time defrost
- Four-speed, 400-CFM venting system
- Easy-clean interior with Steam Clean



### GE® 20" Custom Hood Insert With Dimmable LED Lighting

**UVC7300SLSS**

- 390-CFM blower
- Dual-LED dimmable lighting
- Dishwasher-safe filter



### GE® 36" Custom Hood Insert With Dimmable LED Lighting

**UVC9360SLSS**

- Adjustable 610-CFM blower
- Triple-LED lighting
- Dishwasher-safe filter



### GE® Hood Liner

- Custom appearance and built-in convenience
- UXHL30 - 30"  
UXHL36 - 36"*



GE APPLIANCES

À LA CARTE OPTIONS Free-Standing Ranges, Microwaves and Ventilation

# À la Carte Options

## REFRIGERATORS & FREEZERS

### French-Door Refrigerators



#### GE® 18.6 Cu. Ft. Smart Counter-Depth Refrigerator

**GWE19JYLFS**

- Fits 33" openings
- Fingerprint Resistant
- Factory-installed icemaker with water filtration system
- LED lighting



#### GE® 24.7 Cu. Ft. Smart Refrigerator

**GNE25JYKFS**

- Fits 33" openings
- Fingerprint Resistant
- Internal water dispenser
- LED lighting
- Factory-installed icemaker



#### GE® 20.8 Cu. Ft. Smart Refrigerator with Door Alarm

**GNE21FYKFS\***

- Fits 30" openings
- LED lighting
- 2 humidity-controlled drawers and 1 full-width, adjustable-temperature drawer
- Factory-installed icemaker



### Side-by-Side Refrigerators



#### GE® 23.0 Cu. Ft. Refrigerator

**GSE23GYPFS**

- 33" wide refrigerator
- Fingerprint Resistant
- LED lighting
- Edge-to-edge shelves
- Clear door shelves



#### GE® 25.3 Cu. Ft. Refrigerator

**GSE25GYPFS**

- 36" wide refrigerator
- Fingerprint Resistant
- Edge-to-edge shelves
- Clear door shelves
- Interior storage drawers



#### GE® 21.9 Cu. Ft. Counter-Depth Refrigerator

**GZS22DSJSS**

- 36" wide refrigerator
- Counter-depth design
- LED lighting
- Integrated shelf support system
- Adjustable slide-out, spillproof glass shelves
- Adjustable clear door bins

### Bottom Freezer



#### GE® ENERGY STAR® 17.7 Cu. Ft. Counter-Depth Bottom-Freezer Refrigerator

**GBE17HYRFS**

- Fits 32" Openings
- Narrow Width
- Counter Depth
- Recessed Handles



\*SmarterHQ™ Connect Module is required and sold separately. It is available for order on [geappliances.com](http://geappliances.com), part number PBX23W00YO.

# À la Carte Options

## REFRIGERATORS & FREEZERS

### Top Freezer Refrigerators

Voted  
#1



#### GE® 16.6 Cu. Ft. Refrigerator

##### GTE17

- Fits 28" openings
- #1 in Quality and Dependability\*
- LED lighting
- Adjustable wire shelves
- Upfront temperature controls

GTE17DTNRBB - Black  
GTE17DTNRWW - White  
GTE17GSNRSS - Stainless



Voted  
#1



#### GE® 17.5 Cu. Ft. Refrigerator

##### GIE18GSNRSS

- Fits 28" openings
- #1 in Quality and Dependability\*
- LED lighting
- Edge-to-edge glass shelves
- Sliding deli drawer



Voted  
#1



#### GE® 19.2 Cu. Ft. Refrigerator

##### GIE19JSNRSS

- Fits 30" openings
- #1 in Quality and Dependability\*
- Premium inner door
- LED lighting
- Edge-to-edge glass shelves



#### GE® 17.5 Cu. Ft. Refrigerator

##### GTE18

- Fits 33" openings
- LED lighting
- Edge-to-edge glass shelves
- Sliding deli drawer

GTE18DTNRBB - Black  
GTE18DTNRWW - White  
GTE18GSNRSS - Stainless



Voted  
#1



#### GE® 21.1 Cu. Ft. Refrigerator

##### GIE22J

- Fits 33" openings
- #1 in Quality and Dependability\*
- Premium inner door
- LED lighting

GIE22JSNRSS - Stainless  
GIE22JTNRBB - Black  
GIE22JTNRWW - White



#### GE® 21.1 Cu. Ft. Refrigerator

##### GTE22J

- Fits 35" openings
- Premium inner door
- LED lighting

GTE22JSNRSS - Stainless  
GTE22JTNRBB - Black



\*Among 16-22 cu. ft. refrigerators based on an independent study of property maintenance personnel.  
Source: The Stevenson Company, 2020—Market research company with over 20 years of experience in the appliance industry.



GE APPLIANCES

À LA CARTE OPTIONS Refrigerators & Freezers



GE APPLIANCES

# LAUNDRY PACKAGES



# FRONT LOAD LAUNDRY

## GOOD



### GE® 4.6 Cu. Ft. Capacity Smart Front Load ENERGY STAR® Washer

GFW510SCNWW

GFW510SCVWW



Available September 2023

- UltraFresh Vent System with OdorBlock™
- Microban Antimicrobial Technology
- True 32" depth



### GE® 7.8 Cu. Ft. Capacity Smart Front Load Dryer

GFD55

- Built-In WiFi powered by SmartHQ™
- Quick Dry
- Sanitize cycle

GFD55ESSNWW - Electric  
GFD55GSSNWW - Gas  
GFD55ESSNWW - Electric



## BETTER



### GE® 5.0 cu. ft. Capacity Smart Front Load ENERGY STAR® Steam Washer with Sanitize + Allergen

GFW655SPVDS - Black

GFW655SSVWW - White

- UltraFresh Vent System with OdorBlock™
- SmartDispense™ Technology
- Microban® Antimicrobial Technology



### GE® 7.8 cu. ft. Capacity Smart Front Load Dryer with Steam and Sanitize Cycle

GFD65ESPVDS - Black, Electric

GFD65GSPVDS - Black, Gas

GFD65ESSVWW - White, Electric

GFD65GSSVWW - White, Gas

- Power Steam Technology
- Quick Dry
- Built-In WiFi powered by SmartHQ



## BEST



### GE® 5.0 Cu. Ft. Capacity Smart Front Load ENERGY STAR® Washer

GFW850SPNRS

- SmartDispense™ Technology
- 1 Step Wash + Dry
- UltraFresh Vent System with OdorBlock™



### GE® 7.8 Cu. Ft. Capacity Smart Front Load Dryer

GFD85

- Stainless steel drum
- Washer Link
- Steam Refresh

GFD85ESPNRS - Electric  
GFD85GSPNRS - Gas



### GE® FRONT LOAD WASHER/DRYER PEDESTALS

GFP1528SNWW-White  
GFP1528PNDG-Diamond Gray  
GFP1528PNRS-Sapphire Blue



### GE® LAUNDRY 7" RIGHTHEIGHT™ RISER

GFR0728SNWW-White  
GFR0728PNRS-Sapphire Blue  
GFR0728PTDS-Carbon Graphire

# TOP LOAD LAUNDRY

## GOOD



### GE® 3.8 Cu. Ft. Capacity Washer

#### GTW220ACKWW

- Precise Fill with 4 water levels
- Dual-Action agitator
- Stainless steel basket



### GE® 6.2 Cu. Ft. Capacity Dryer

#### GTX22

- Auto Dry
- Up to 120-ft. venting capability
- Aluminized alloy drum

GTX22EASKWW - Electric  
GTX22GASKWW - Gas

## BETTER



### GE® 4.4 Cu. Ft. Capacity Washer

#### GTW490ACJWS

- Efficient Infusor
- Deep Fill
- Stain Pretreat



### GE® 7.2 Cu. Ft. Capacity Electric/Gas Dryer

#### GTD45

- Up to 120-ft. venting capability
- Aluminized alloy drum
- Extended Tumble

GTD45EASJWS - Electric  
GTD45GASJWS - Gas



### GE® 4.2 Cu. Ft. Capacity Washer with Stainless Steel Basket

#### GTW525ACPWB

- 5-year/10-year/Lifetime Limited Warranty
- Large 4.2 cu. ft. Capacity Tub
- Water Level Control
- Commercial-Grade Components



### GE 6.2 Cu. Ft. Capacity Aluminized Alloy Drum Dryer

#### GTX52

- 5-year warranty
- Even airflow
- Long vent
- Commercial-Grade Components

GTX52GASPWB - Gas  
GTX52EASPWB - Electric



### GE® 24" Unitized Washer/Dryer with 2.3 Cu. Ft. Capacity Washer and 4.4 Cu. Ft. Capacity Dryer

#### GUD24

- Stainless steel basket
- Bleach and fabric softener dispensers
- 11 wash cycles
- 6 wash temperatures
- 1 wash/spin speed combination
- Auto Load Sensing
- Rotary electronic controls

GUD24ESSMWW (Electric)  
GUD24GSSMWW (Gas)



### GE® 27" Unitized Washer/Dryer with 3.8 Cu. Ft. Capacity Washer and 5.9 Cu. Ft. Capacity Dryer

#### GUD27

- Stainless steel basket
- 11 wash cycles
- 6 wash temperatures
- Heavy-duty agitator
- Auto Load Sensing with 4 water levels
- Rotary electronic controls

GUD27ESSMWW (Electric)  
GUD27GSSMWW (Gas)

# COMMERCIAL LAUNDRY

## Life is full of cycles

We're here to see you through them all. Again. And again. And again.



**Commercial Universal Coin Box**

**VKAUNICBT-GE®**



**Commercial Single Coin Drop**

**VTA56SCDT-GE®**



**Commercial Coin Housing Kit**

**VTA56CHKT-GE®**

### GE® 3.8 Cu. Ft. Capacity Commercial Washer with Stainless Steel Basket

**VTW565ASVWB**

#### Commercial-Grade Components and Materials

Built to last with a heavy-duty agitator, ½ horsepower motor, stainless steel wash basket, galvanized steel cabinet, and metal transmission.

#### Protected with Microban®

Antimicrobial Technology built into high-touch elements on the control panel

#### 800 RPM Spin Speed

A higher spin speed maximizes water extraction

### GE 7.7 Cu. Ft. Capacity Dryer, Standalone Unit

#### Commercial-Grade Components

This dryer is built to last, with upgraded hinges, knobs, door strength and close latches for long-lasting performance

#### Protected with Microban®

Antimicrobial Technology built into high-touch elements on the control panel

#### 7.7 Cu. Ft. Capacity

Maximizes revenue with an extra-large capacity that delivers the drying experience that tenants and guests expect

**VTD56EASVWB - Electric**

**VTD56GASVWB - Gas**

Discover more: [geappliances.com/commercial-laundry](https://geappliances.com/commercial-laundry)





# Haier

## City-inspired appliances designed for any size home

Bring the energy of the city to any living space with Haier's full-size and small-space appliances. Haier Appliances offers worldly inspired design simplicity, at a value.



See the latest from Haier  
on our social channels.





## Small Space Kitchen Appliance Suite

Haier small-size appliances let you live large even in the smallest kitchen. Integrated handles, unique configurations, built-ins and free-standing appliances – our smaller appliances are designed for function, fashion and easy installation. Whether you've got an urban apartment or condo, tiny kitchen, man cave, home bar, or even an RV, we've got small-size appliances to maximize space with style to spare.



**Refrigerators**  
33" Wide or Less



**24" Ranges**



**24" Wall Ovens**



**24" Microwaves**



**18" Dishwashers**

**Explore the #1 brand of major appliances  
in the world for over 10 years in a row.**



# Hotpoint. TOUGHER ♦ THAN ♦ TENANTS

Since 1903, Hotpoint has built appliances that get the job done right. That's why we know property manager customers will appreciate the fact that we've designed our appliances to be tougher than ever, while still respecting their budgets and timelines. We take pride in making life just a little easier and in building appliances that are strong enough to wear our logo.



SEE THE LATEST FROM HOTPOINT ON OUR SOCIAL CHANNELS.

# TOUGHER THAN TENANTS PACKAGE



## Hotpoint® 15.6 Cu. Ft. Recessed Handle Top-Freezer Refrigerator

**HPS168TNR**

- LED lighting
- Pocket handles
- Adjustable wire shelves

HPS168TNRWW - White  
HPS168TNRBB - Black



## Hotpoint® 17.5 Cu. Ft. Recessed Handle Top-Freezer Refrigerator (Not shown)

**HPS18BTNR**

- LED lighting
- Pocket handles
- Adjustable wire shelves

HPS18BTNRWW - White  
HPS18BTNRBB - Black



## Hotpoint® 1.6 Cu. Ft. Over-the-Range Microwave Oven

**RVM5160DH**

- Convenience cooking controls
- Weight and time defrost
- Turntable
- Two-speed, 300-CFM venting system

RVM5160DHWW - White  
RVM5160DHBB - Black

## Hotpoint® One Button Dishwasher with Plastic Interior

**HDF310PGR**

- Active Flood Protect
- One-button cycle operation
- Completely washed and dried dishes
- Hard-foed disposer
- 60 dBA dishwasher

HDF310PGRWW - White  
HDF310PGRBB - Black



## Hotpoint® 30" Free-Standing Standard Clean Range

**RBS360DM**



- Standard clean oven
- Sensi-Temp Technology
- Electronic clock and timer

RBS360DMWW - White  
RBS360DMBB - Black

## Hotpoint® 30" Free-Standing Range (Not shown)

**RGBS300DM**



- Standard clean oven
- 4.8 cu. ft. oven capacity
- Sealed cooktop burners
- Porcelain upswept cooktop

RGBS300DMWW - White  
RGBS300DMBB - Black





WE CONNECT. WE SIMPLIFY.  
**WE LEAD.**